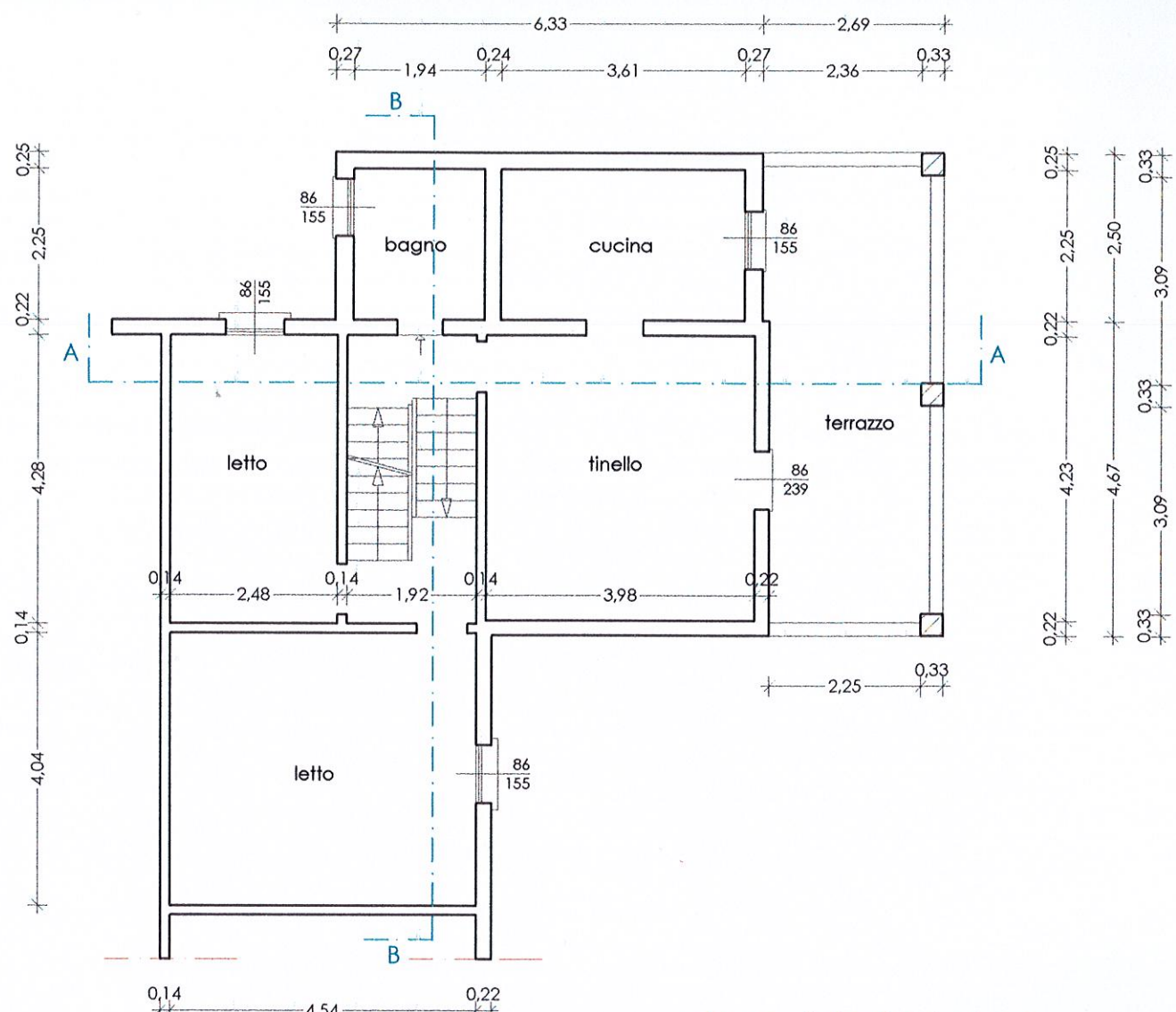
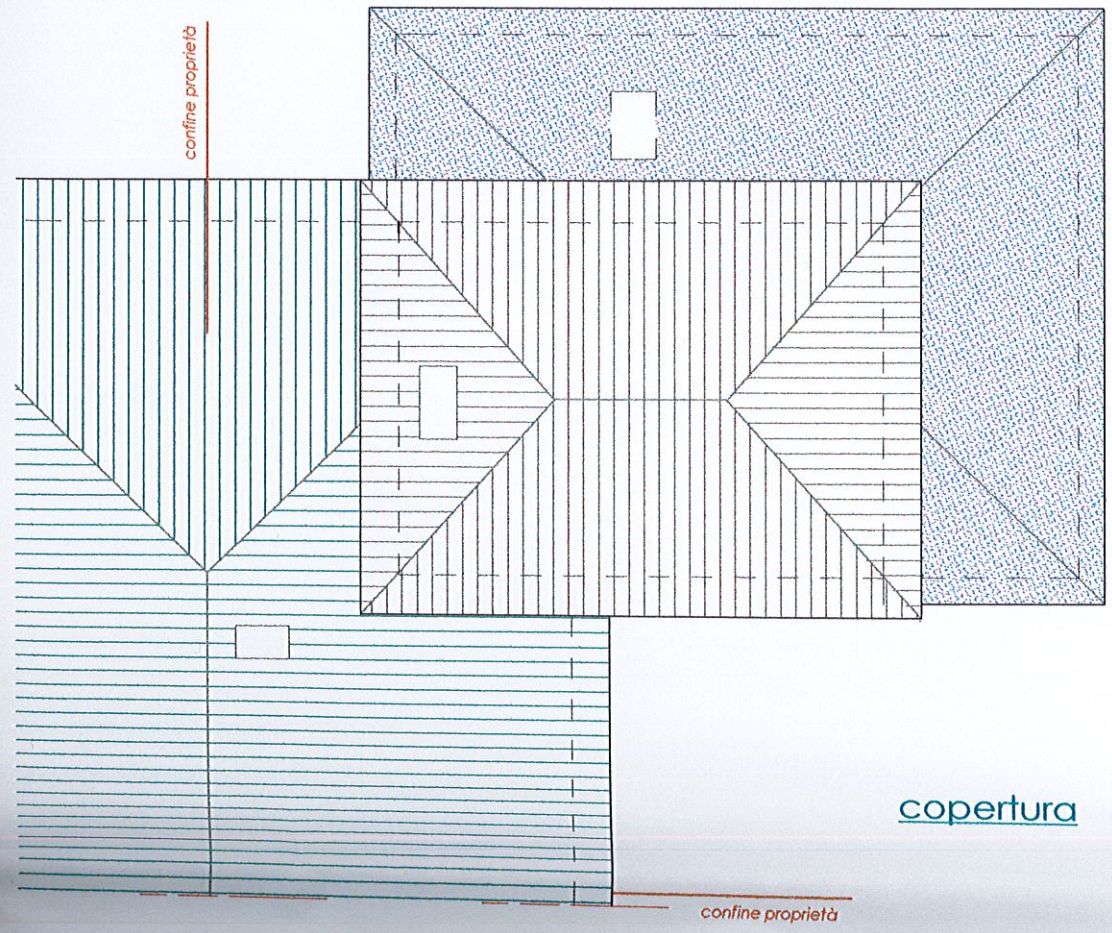


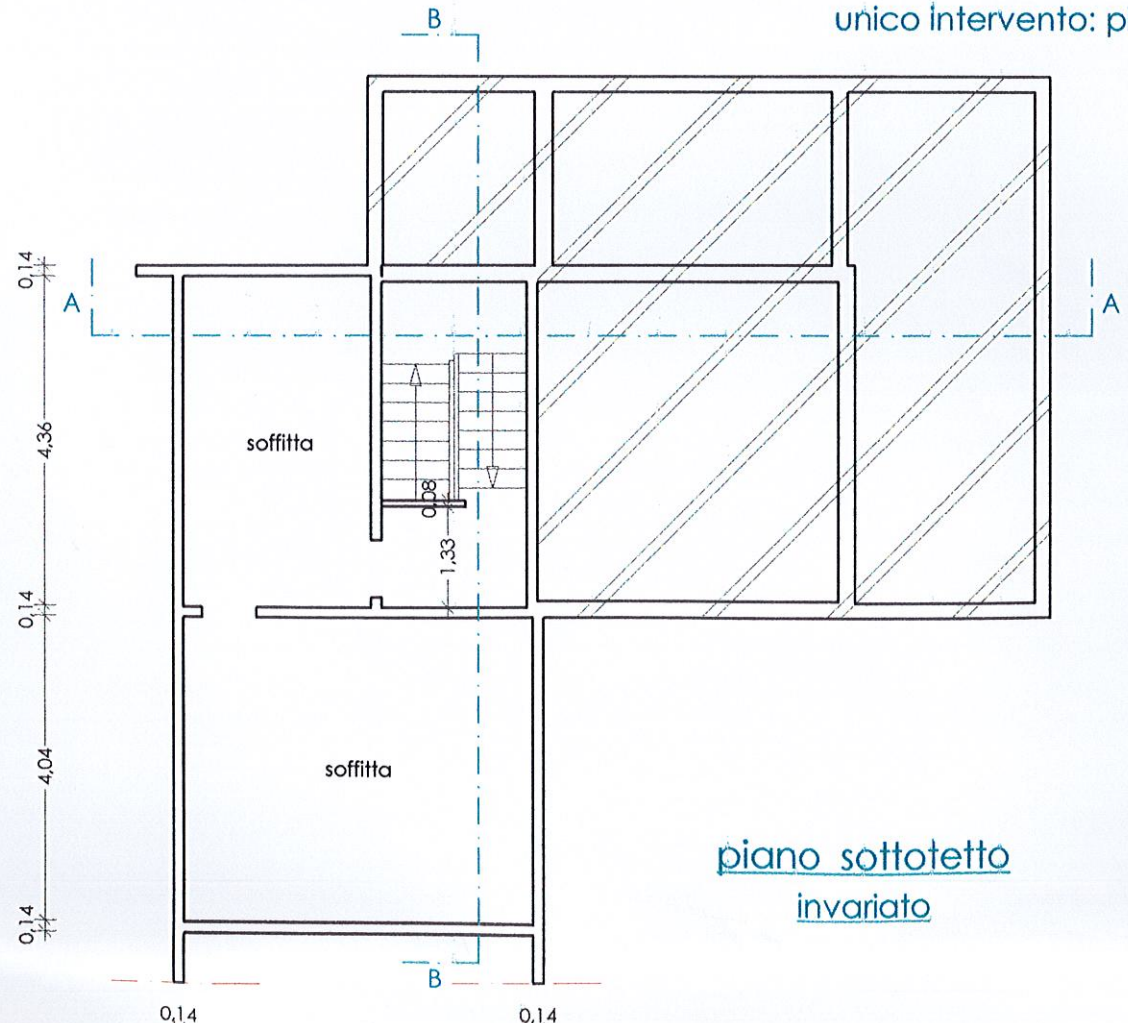
piano seminterrato / terra
 unico intervento: pilastri portico uniformati



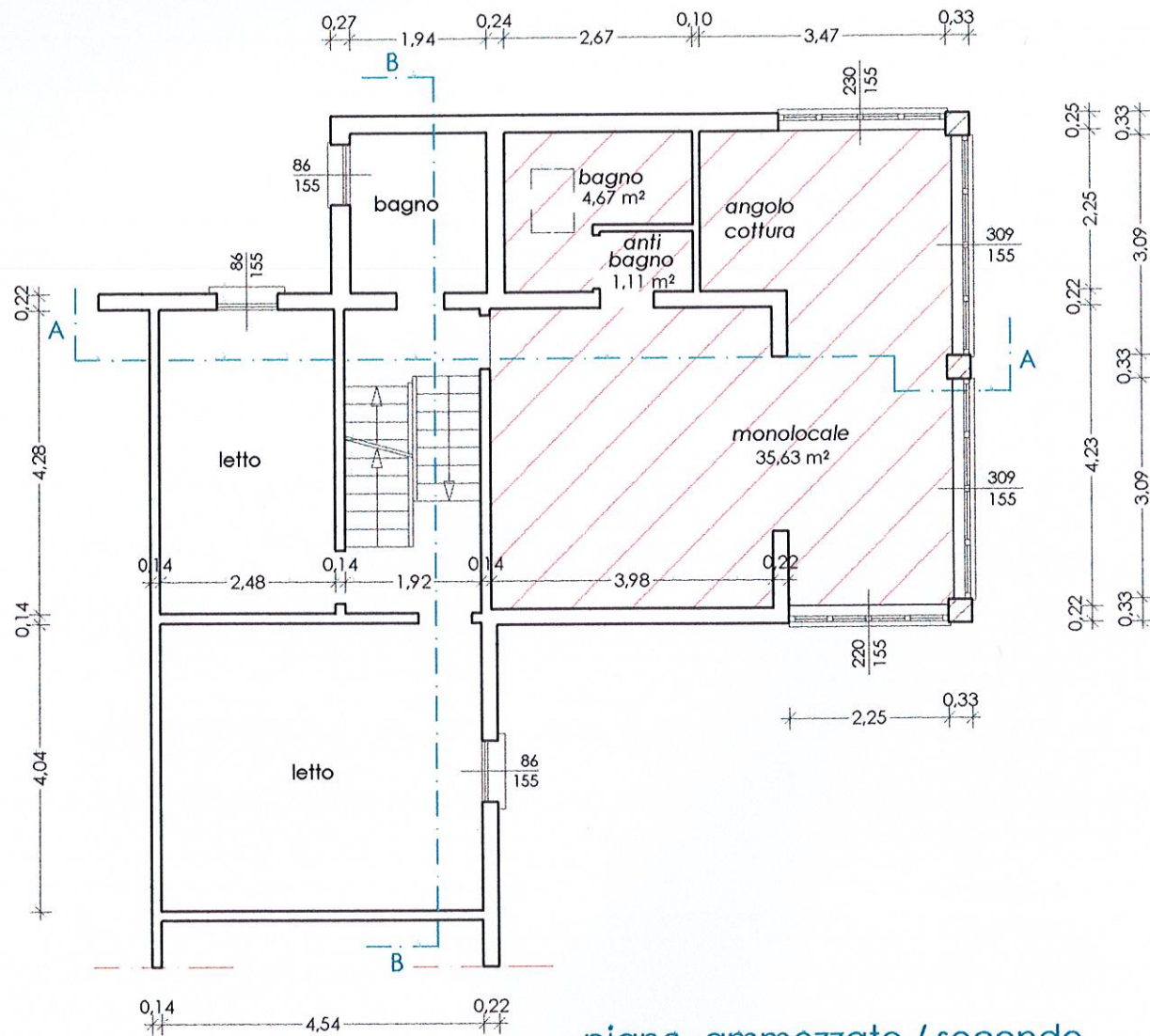
piano rialzato / primo
 unico intervento: pilastri terrazzo uniformati



copertura

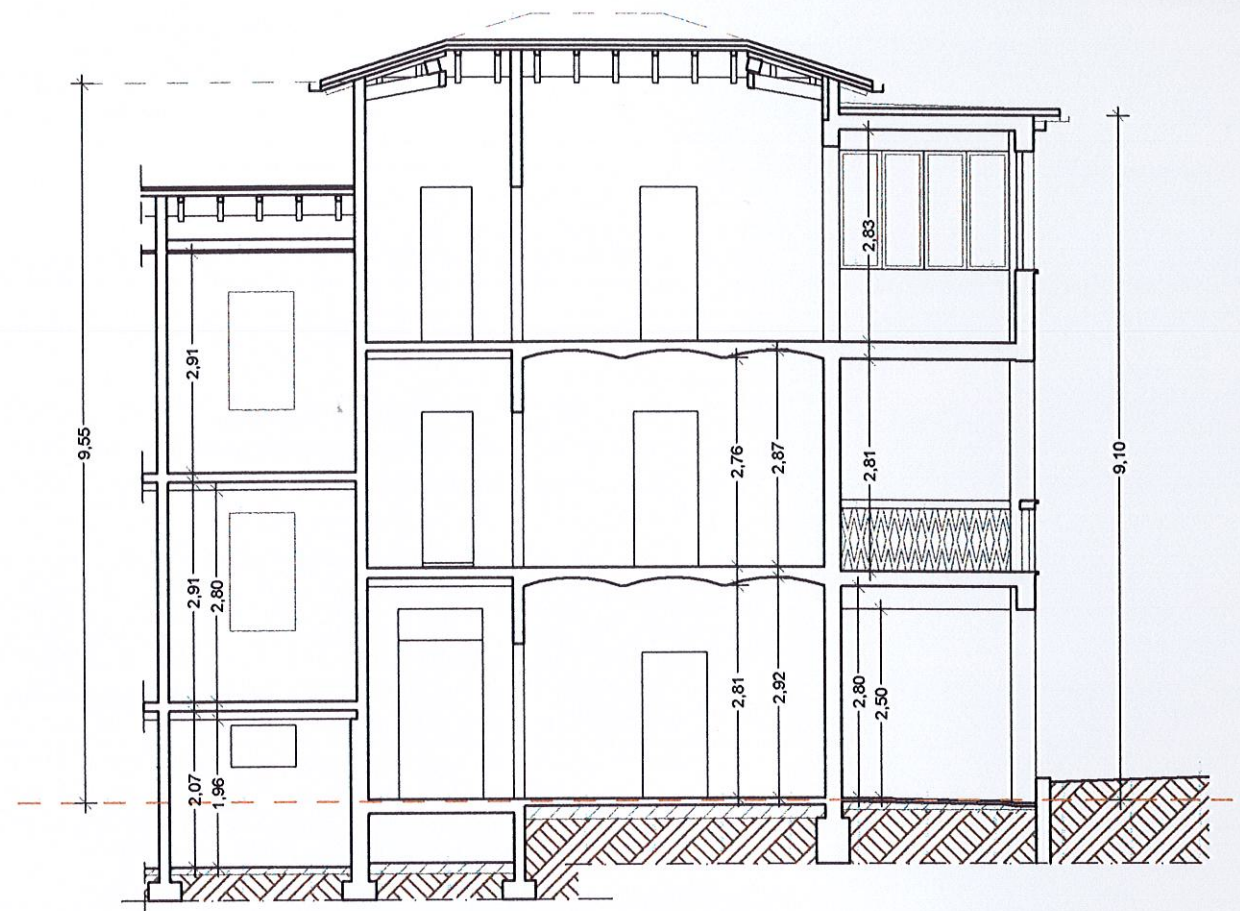


piano sottotetto
 invariato

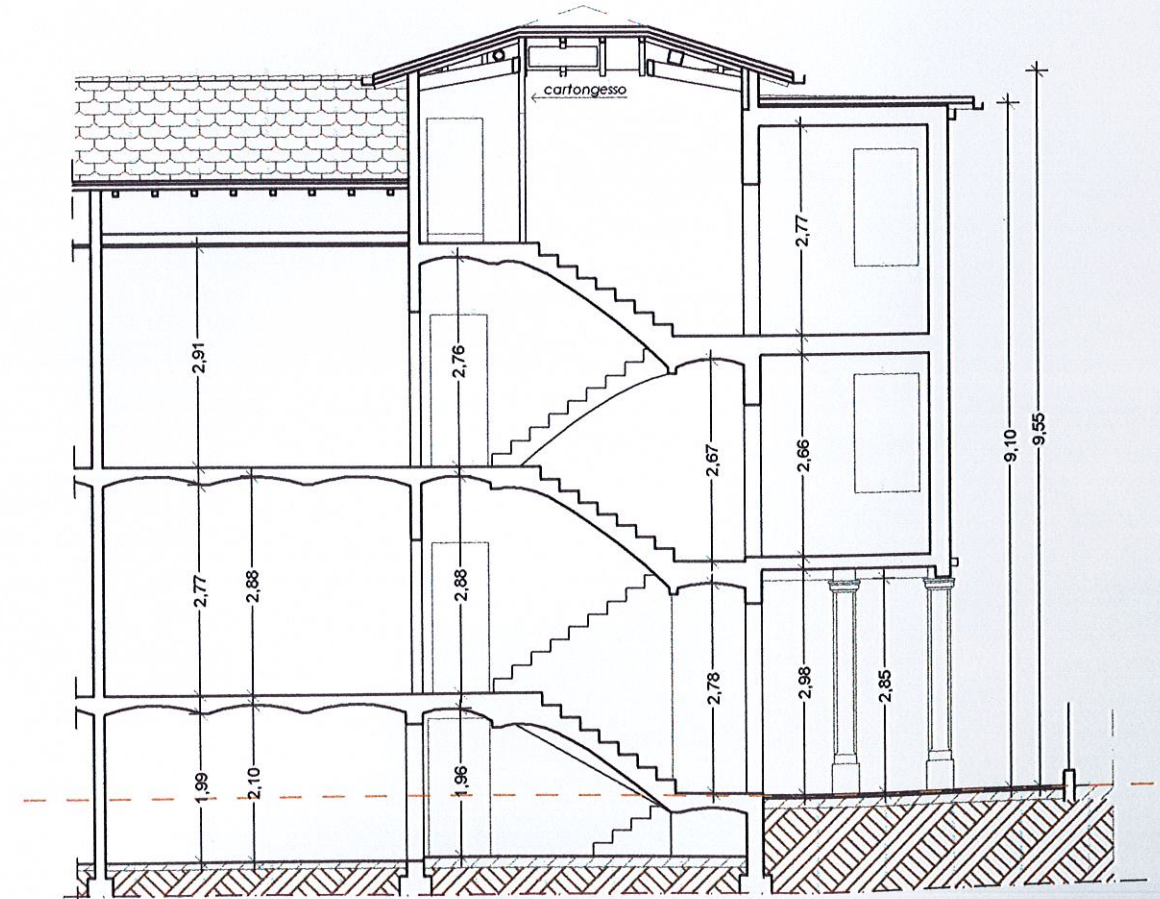


piano ammezzato / secondo

MONOLOCALE			
sup. netta totale mq. 41,41			
TABELLA RAPPORTO SUPERFICIE ILLUMINANTE - VENTILANTE			
destinazione	sup. mq.	S.I. - S.V.	
		1/8 1/12	sup. reale
monolocale	35,63	4,45	16,55
bagno	4,67	0,40	0,54



sezione A - A



sezione B - B